

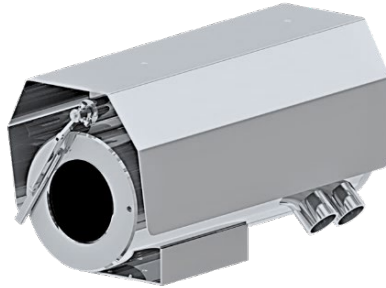
## SS1CH-5x5M Series

### Stainless Steel Weatherproof Fixed Camera Housing

Integrated with 5MP 5x Optical Zoom Ventionex VX3 DNN Analytics Camera Module with optional built-in edge analytics



SS1CH



SS1CH-W



SS1CH-LEDW

### Main Features



Marine grade  
AISI316L Stainless  
Steel material



IP 66 / 68



5MP Resolution  
5x optical zoom lens



Options for LED  
illuminator available



Option for IEEE  
802.3at PoE+



(Optional) Intelligent  
Video Analytics for  
Human, Vehicle &  
Object Detection



(Optional) Advanced  
Analytics Fire or  
Smoke Detection



(Optional) Simplify  
Unified Intelligent  
Platform & Radar  
Tracking Integration

## Technical Data

General	
Ingress Protection	IP 66 / 68
Operating Temperature	-40°C to 60°C
Relative Humidity	≤95%
Mechanical	
Body Material	AISI316L Stainless Steel
Sight Glass Material	Window with hardened mineral clear tempered glass
	Window with Germanium glass (for SS1CH-G and SS1CH-GL models)
Overall Dimension (WxHxD)	<i>Please refer to overall dimension drawings of each model.</i>
Weight	Approximate 20KG
Internal Usable Size for Camera Module	Ø80 x 155 mm
Cable Entry	2 x M25
Electrical	
Operating Voltage	AC110-240V (0.5A - 1.10A), 50/60Hz Optional: IEEE 802.3at PoE+
Power Consumption	Max 110W (110V), Max 120W (240V)
Thermostatically Controlled Heater	T°C on: <10°C, T°C off: >10°C
Optional	
Wiper Mechanism	Available for SS1CH-W and SS1CH-LEDW model
LED Illumination	Up to 200 meters (Available for SS1CH-LED and SS1CH-LEDW model)
Accessories	
Standard	Sunshield, Swivel Joints
Optional	Wall Bracket

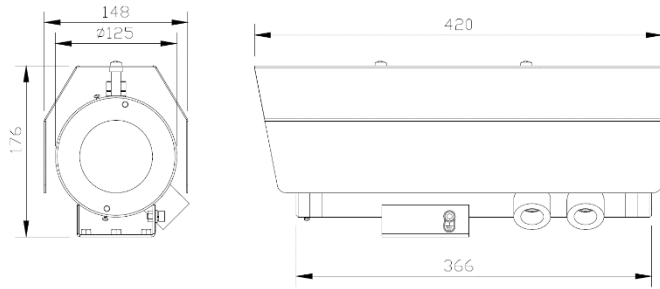
## IP Camera/Lens

Camera	
Day/Night	Automatically removable IR-cut filter
Shutter Time	1~1/10K s
Image Settings	Color, Brightness, Sharpness, Contrast, White Balance, Exposure Control, 2DNR, 3DNR, NR by Motion Masking, Text Overlay
Corridor Mode	Corridor Mode 90°, 180°, 270° rotation
Image	
Image Sensor	1/2.7" Progressive CMOS
Effective Pixels	HxV = 2720x1976 (5MP)
Pixel Size	2.0 μm
Lens Type	Motorized Lens, P-Iris, F1.6
Focal Length	f =2.7 mm (wide) to 12.0 mm (tele)
FOV	Horizontal: 102.1° (wide), 31.5° (tele)      Vertical: 70.3° (wide), 22.7° (tele)
Zoom	5x optical zoom, digital zoom ready
Min. Illumination	Color: 0.11Lux      B/W: 0.023Lux
Frame Rate (Maximum)	H.265 HDR 5M @30fps + 720p @30fps
	H.264 HDR 5M @30fps + 720p @30fps
	MJPEG: 1080p @30fps
Compression Standard	
Video Compression	H.265/H.264/MJPEG
Video Streaming	Up to 4 individually configurable streams in H.265/ H.264/ MJPEG, Configurable resolution/ frame rate/ bandwidth VBR/ CBR in H.265/ H.264
Audio Compression	G.711/ G.726/ LPCM
Network	
Security	User Authentication/ HTTPS/ IP Filter/ IEEE 802.1x
Supported Protocols	ARP, PPPoE, IPv4/v6, ICMP, IGMP, QoS, TCP, UDP, DHCP, UPnP, SNMP, SMTP, RTP, RTSP, HTTP, HTTPS, FTP, NTP, DDNS
ONVIF	Profile S/ G/ T/ M conformant
System Integration	
General Analytics	Motion Detection/ Tampering
Intelligent Video Analytics	<i>(optional upon request)</i> Human, Vehicle & Object Detections for Tripwire / Intrusion / Loitering / Abandoned Object / Missing Object / Parking Detection / Crowd Detection
Advanced Analytics	<i>(optional upon request)</i> Fire Detection or Smoke Detection
Intelligent Platform	<i>(optional upon request)</i> Simplify Unified Intelligent Platform Integration, Radar Tracking Integration
Event Triggers	External Input, Analytics, Network Failure Detection, Periodical Event, Manual Trigger
Event Actions	External output Activation, Video, and audio recording to edge storage File Upload: FTP, network share and email Notification: HTTP, FTP, email
Intelligent Video Analytics	
General Analytics	Motion Detection/Tampering/Audio detection
Interface	
Storage	Support for MicroSD/microSDHC/microSDXC card Support for recording to NAS

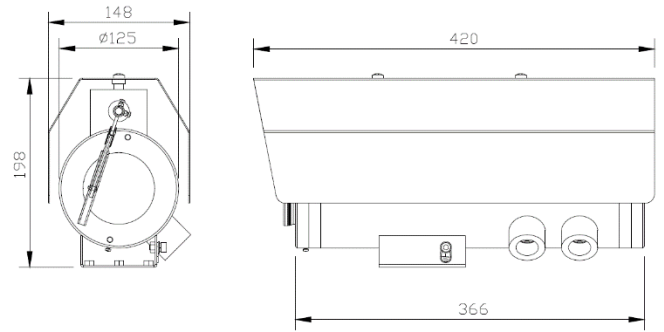
\*Analog camera and other camera module options are available upon request.

\*Thermal camera options are available for G model. Please contact us for the details

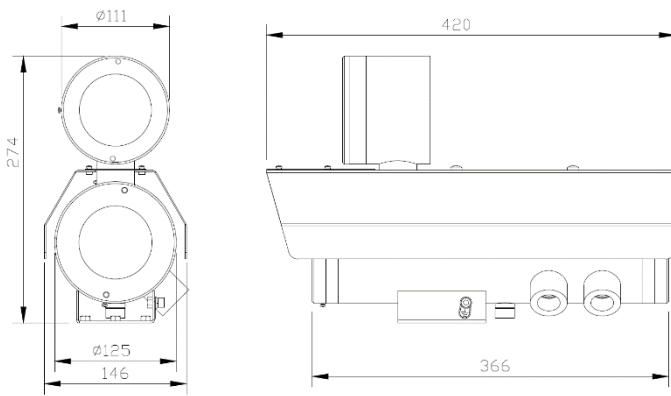
## Outline Dimensions (mm)



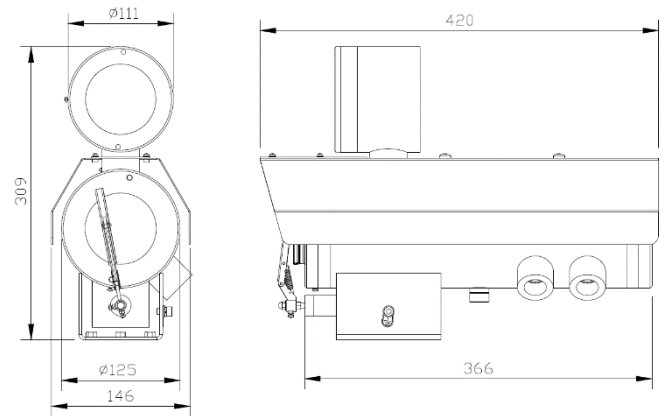
SS1CH Outline Dimensions



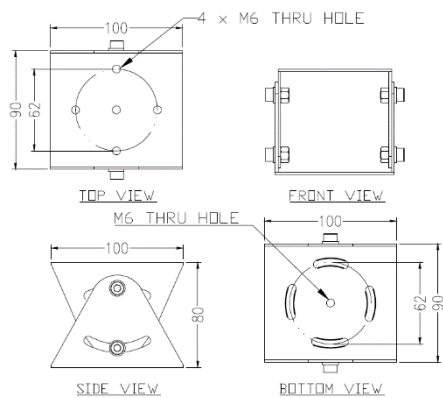
SS1CH-W Outline Dimensions



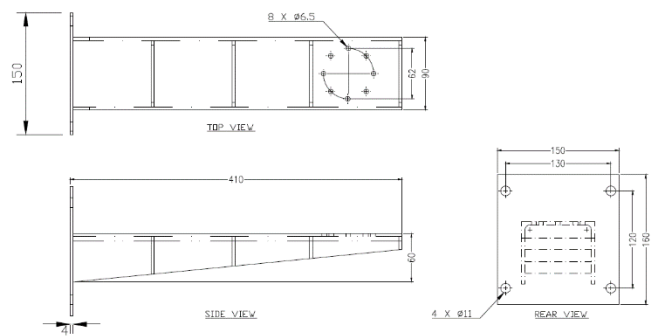
SS1CH-LED Outline Dimensions



SS1CH-LEDW Outline Dimensions



SJ-SS1CH - Swivel Joints Outline Dimensions



WB-SS1CH - Wall Bracket Outline Dimensions

SS1CH - X - 5x5M - X

POE Options

Blank : No additional option  
POE : POE+

Additional Options

Blank : No additional option  
W : Fitted with wiper mechanism  
LED : With LED Illuminator  
LEDW : With LED Illuminator and Wiper

## Standard Accessories

SCH-SS1CH : Sunshield for Camera Housing (for SS1 series without LED illuminator)  
SCH-SS1CH-LED : Sunshield for Camera Housing with LED illuminator (for SS1CH-LED and SS1CH-LEDW)  
SJ-SS1CH : Swivel Joints

## Optional Accessories

WB-SS1CH : Wall Bracket